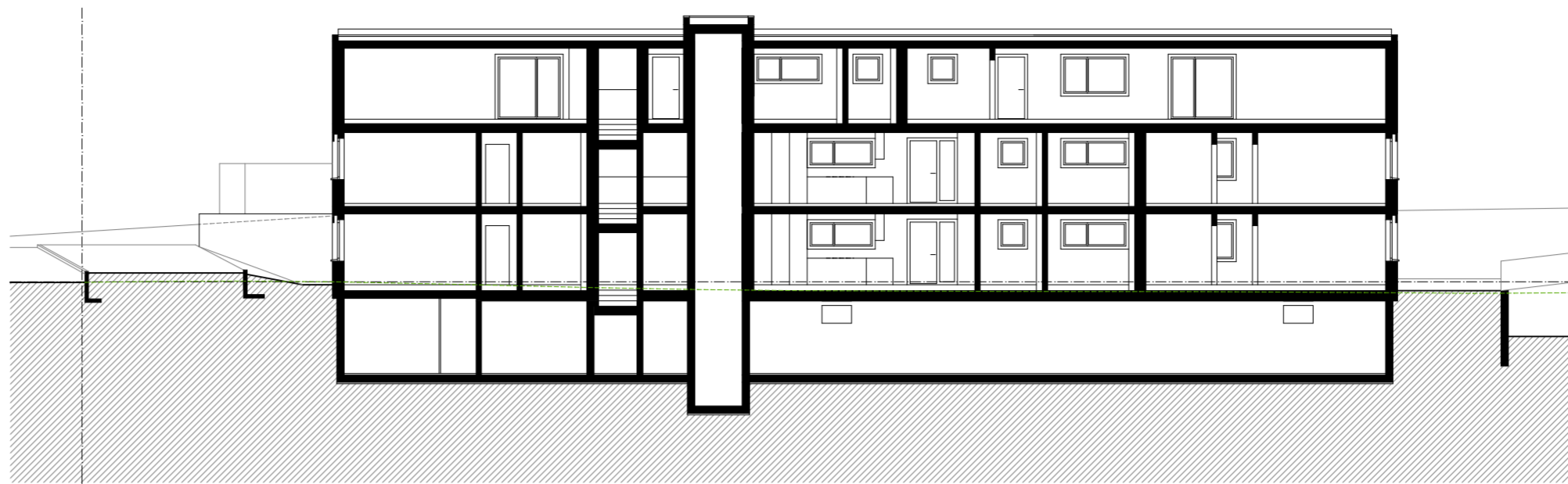
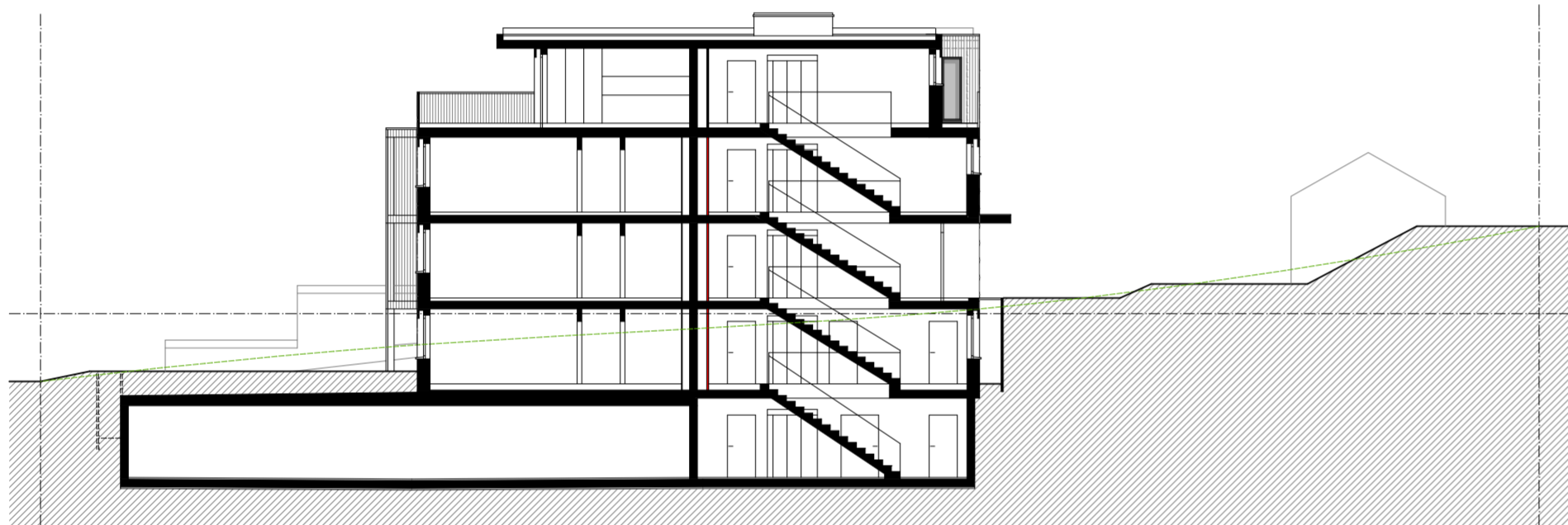


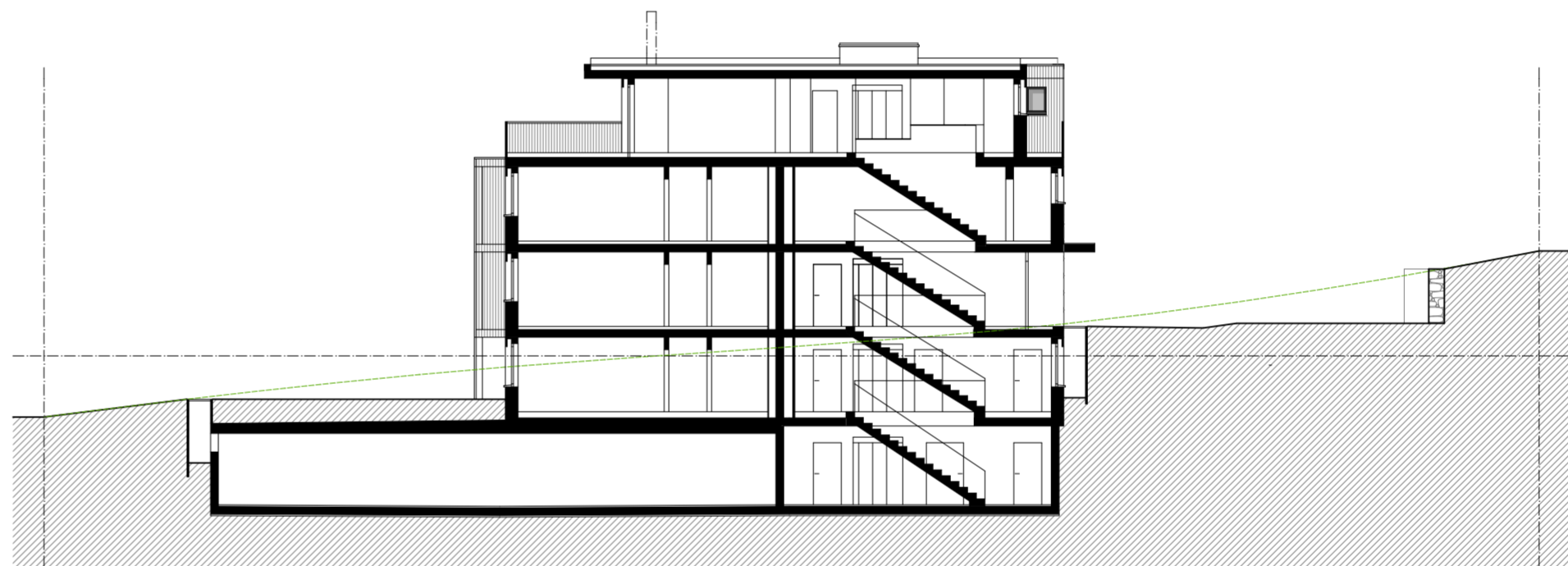
Haus A Querschnitt



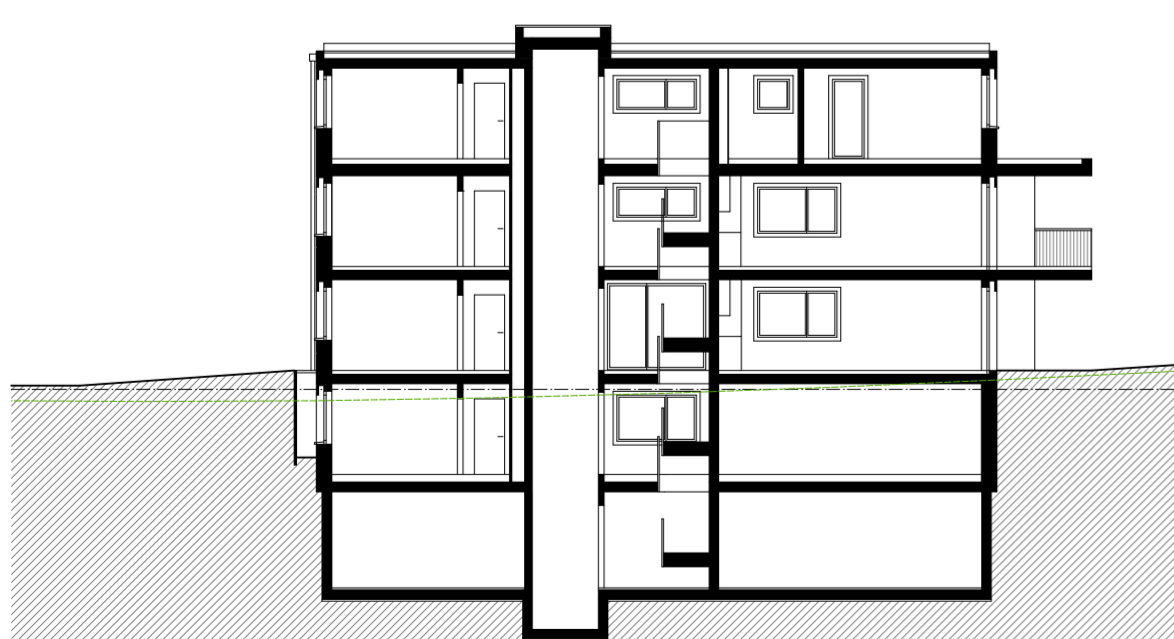
Haus A Längsschnitt



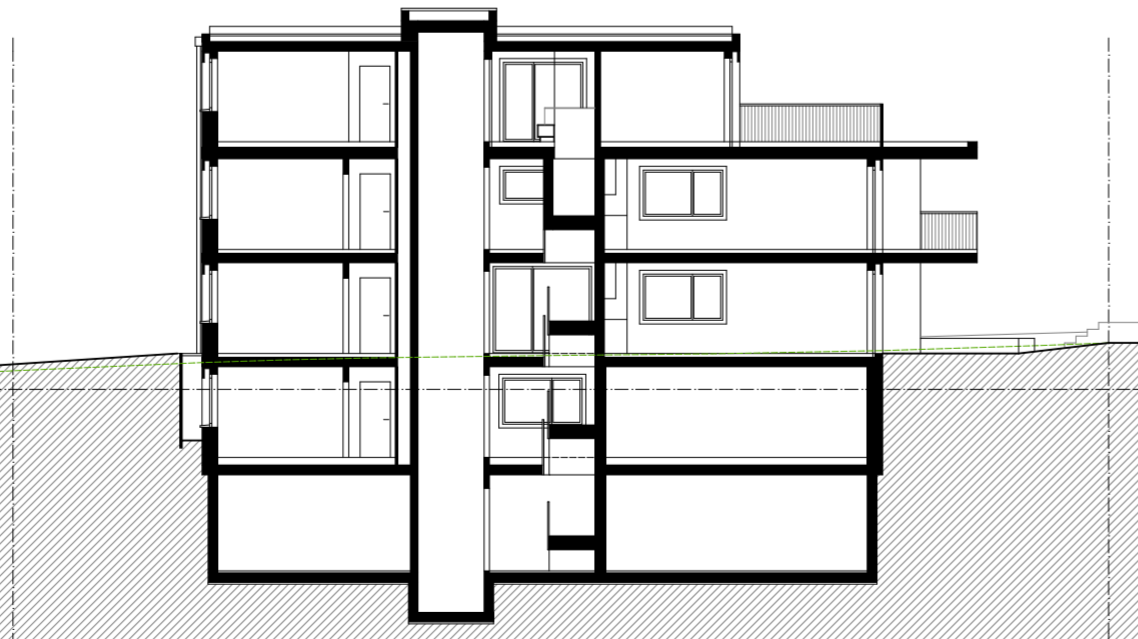
Haus B Querschnitt



Haus C Querschnitt



Haus B Längsschnitt



Haus C Längsschnitt

brunner weibel
architekten

Wohnüberbauung
Gülich
Präfikon ZH
Schnitte Häuser A + B + C
1:200

0 5
|||||